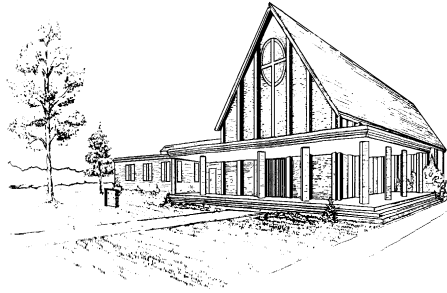


STEEPLE CHIMES



First Presbyterian Church 497 Pulaski Road, Greenlawn, NY 11740

Phone: (631) 261-2150

Fax: (631) 261-0348

Email: fpcgreenlawn@optonline.net

February 2012

ISSUE: One Hundred Forty –Four

Message from the Pastor

Can it really be February already? Weren't we just kneeling at a manger in Bethlehem? Can it already be time in a few short weeks to start our journey toward Jerusalem?

Even if we have packed up all our Christmas decorations and taken down all our Christmas lights, it remains very tempting for us to linger around the baby Jesus in a manger at Bethlehem. But faith is not nostalgia, and if we tarry too long in Bethlehem, we will be at risk of losing sight of our Savior who goes ahead of us to Jerusalem. But what does it mean to journey to Jerusalem with Jesus? What does it mean to become a people shaped by the *cross* of our Lord Jesus Christ?

These questions are especially appropriate for Lent which begins with Ash Wednesday on February 22nd. Although Scripture never holds up suffering for suffering's sake, it does anticipate that disciples will participate in the suffering of the One they seek to follow. Why? If we suffer as disciples, it is because our Lord Jesus Christ himself suffered for the sake of our broken world. If we truly join him in his redeeming work in the world, we shall also join him in his suffering.

It is my prayer that we will continue to trust in our triune God even and especially in the face of all the trials and tribulations that tend to break us as a people of God. We can have that trust because God in Jesus Christ identifies with us in our troubles, loss and need, and gathers up all our broken pieces before our merciful God.

In our trust, let us continue to respond to God's call to discipleship and God's invitation to fuller participation in God's mission, whether here in Greenlawn or wherever else we discover God already at work in our world.

Let us trust in the Lord.

Together in service in His Name,
Pastor Fred

Session Update

- There will be a Bake Sale following worship on February 12th.
- The Missions Committee is collecting used cell phones to support the Wounded Warriors Project. Phones may be left in the designated box in the Narthex.
- Lenten Soup Suppers will again be held on Wednesday evenings at 6:30 pm during Lent, beginning February 22nd, Ash Wednesday, and continuing weekly through March 28th
- Pastor Woodward will be on vacation from February 27th through March 4th.
- There will be a Good Friday Service on April 6th at 7:30 pm.
- ◆ Session approved the 2012 church operating budget.

Scouting Recognition Sunday- February 12, 2012

In February 2012, Scouting in the United States turns 102! As part of our celebration of more than a century of scouting as well as the relationship our church is privileged to share with Pack and Troop 877, we will recognize Scouting Recognition Sunday in worship on February 12th. Eagle Scout Cole Ellenbogen, as well as one of our congregation's very own Eagle Scout, Andrew Schweighardt (who, in December, successfully defended his PhD dissertation!) have been invited to speak.

Come join us as we celebrate more than a century of Scouting, recognize Eagle Scouts who have completed their projects at our church over the past years, and affirm our special relationship with the boys of Pack/Troop 877.

Submitted by Pastor Fred

Lenten Soup Suppers

As we enter the Lenten season we reflect on the life of our Savior, Jesus. Ash Wednesday falls on February 22, when we start our Lenten soup suppers. Please join us every Wednesday from February 22nd to March 28th at 6:30 pm. If you are able, please either bring a soup or some bread for everyone to share together.



Valentine's Day Bake-Sale

It's that time of year again for our
Annual Bake Sale
February 12, 2012

Please support this event again with your delicious, special, goodies.

Thank you for your support each year!
God Bless You!

Maria Hottinger

Christian Coffee House

We will be hosting a Coffee House on **Saturday, February 11 at 7:30 PM** in the Christian Education room. We will be featuring Christian music with the Spirit Lifters and Ray MeLogran singing. Admission is \$5.00 and a love offering will be taken. Refreshments will be served. We have hosted both groups in the past and you will be entertained with great, original, Christian music.

Hosted by the Congregational Care Committee

BIBLE STUDY

Bible study is held every Friday morning at 10:30 for both men and women. During this time we discuss passages in the Bible, magazine articles, devotionals, and DVDs and share our thoughts about what the article means to us. We welcome everyone whether you are a member or a guest of the church.

A men's Bible study group is meeting every Thursday evening at 7 PM. During this time we will discuss Bible passages as well as current issues that concern men. Everyone is welcome and feel free to bring friends to share in our discussions.

Thank You!

There is so much about you that lets others see God's goodness and love shining through. That's why this THANK-YOU is really a prayer that HIS blessings will shine upon you!
Thank you so much for your generous giving at Christmas time to my friends at Carillon Nursing Home. God Bless you!

Maria Hottinger



When tempted to lose patience with others

Remember God's patience with you.

Love suffers long and is kind, love does not envy; love does not parade itself, is not puffed up.

1 Corinthians 13:4

*"To Know Christ and to Make Him Known"
The Deacons*

A Reflection on the Season of Lent

Although Lent signifies for us a time of penitence and renewal, it was also a time during which candidates were prepared for baptism at Easter. Lent remains a special season to focus upon what it means to be a disciple or follower of Jesus Christ and to reaffirm our baptismal identity.

Because the Lenten journey is from the ashes of death to resurrected life, both the Protestant and the Catholic traditions have therefore recognized the sign of ashes. As the *Presbyterian Book of Common Worship* reminds the community of the faithful, "this ancient sign speaks of the frailty and uncertainty of human life, and marks the penitence of the (Christian) community."

Not all Presbyterians choose to participate in the imposition of ashes on Ash Wednesday, but all of us do well to recognize the deep significance of this very potent symbolism. In ancient Israel, the symbol of ashes reminded the people of God of both the pervasiveness of human sin and the inevitability of human death. This emblem of grief and mourning has been adopted by the Christian church to signal our needful reliance in all things upon the grace of God.

As you make your journey to the cross as an Easter people, may the grace of God, the fellowship of the Holy Spirit, and the grace of our Lord Jesus Christ be with you all.

Submitted by Pastor Fred

"For dust you are, and to dust you shall return" (Gen 3:19).



February Happenings

Sunday Feb. 12 P.A.C.K. Event

Meet at church at 2 PM to go into our community and give away A
"FREE" item, with a connection card from our church!

ALL are WELCOME to come out and give us a hand!

Sunday Feb. 19 300 Bowling 2-4 PM

Meet at 300 Bowling 895 Walt Whitman Rd on Route 110 – Melville - Just
North of the Northern State Pkwy – Exit 40N – behind Bertucci's

Cost is \$5.25 per game (We usually play at least 2 games)

Shoes are \$4.50 ~ Come out and join us and bring a friend!

-

Don't Forget our FNL Meetings!

Friday Feb 3 7:30-9 PM

Friday Feb 10 7:30 - 9PM

Friday Feb 17 7:30-9 PM

PRAYER CORNER

February 2012

PRAYER

Father, give me the wisdom to know how to pray for others—
with kindness, not criticism; with love, not anger;
with grace, not judgment.

THE WAY TO HAPPINESS

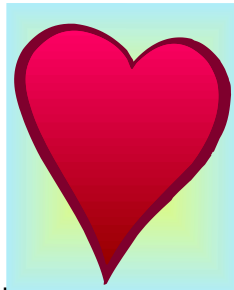
~Norman Vincent Peale

“The way to happiness:
Keep your heart free from hate, your mind from worry.
Live simply, expect little, give much.
Scatter sunshine.
Forget self, think of others.
Try this for a week and you will be surprised.”

A NEW DIRECTION

~Ruth Stafford Peale

“Live one day without any unhealthy thoughts.
It may be very difficult, but try another day
until it becomes habitual,
and life will move in the direction
of becoming healthy, vital and alive.”



Being deeply loved by someone gives you strength,
While loving someone deeply gives you courage.

~Lao Tzu~

(6th century BC)
philosopher of ancient China
and central figure in Taoism

It's easy to fall in love.
The hard part is finding someone to catch you

~Bertrand Russell~

(May 18, 1872– February 2, 1970)
British philosopher, historian, logician,
Nobel Prize in Literature 1950

Love is that condition in which
The happiness of another person
Is essential to your own.

~Robert A. Heinlein ~
(July 7, 1907 – May 8, 1988)
American novelist

The first duty of love - is to listen
~Paul Tillich~
(August 20, 1886 – October 22, 1965)
German-American theologian,
Christian existentialist philosopher

submitted by Betty Chatfield



A Church in Need of a Church Treasurer

Our current church treasurer, Jim Dean, has signaled his intention to stand down with the completion of the annual reports for 2011. He has faithfully served the church over these last years, and really does deserve “a break.”

At the time of this writing, our church has not yet identified a church treasurer to succeed Jim in 2012. On top of that, our current finance chair, Elder Flavio Gominho, completed his second term of service at the end of December. Because of attrition on that committee, we approach 2012 not only without a Treasurer, but also with a very reduced

Finance Committee.

While fully trusting that God shall provide, I write to alert you to the seriousness of this developing situation within the life of our church. I invite your prayers that other leaders might soon be identified to fill the gap. For a church without a Treasurer or a fully-functioning Finance Committee shall be hard-pressed to properly attend to its institutional life, not to mention faithfully execute its mission in the world.

Submitted by Pastor Fred